



SITTING BEAR

See Reverse Side
for Floor Plans

- 1 level with 3 bedrooms/2 bathrooms, built on a crawlspace
- 1,625 heated square feet, 407 unheated square feet
- An optional unfinished or finished basement can be added. A finished basement adds a 2nd master suite with bath, family room, and 1,230 heated square feet
- Covered porches
- Ventless gas fireplace
- 6x8 D logs on main level with a Limited Lifetime Warranty
- Log siding and cedar shake siding on gable ends
- Vaulted ceilings
- Premium high performance, Low-E windows and doors
- Conventional framed or pre-engineered I-joist roof framing system
- 30-year architectural shingles or 25 year ribbed metal roofing
- Premium door and window hardware

©2015 Walker Top Log Homes

updated 5/6/15



In Partnership With ...



675 S Old Piedmont Highway
Greenville, SC 29611

office 864-220-2884 • fax 864-220-2818
email Info@WalkerTop.com • www.WalkerTop.com

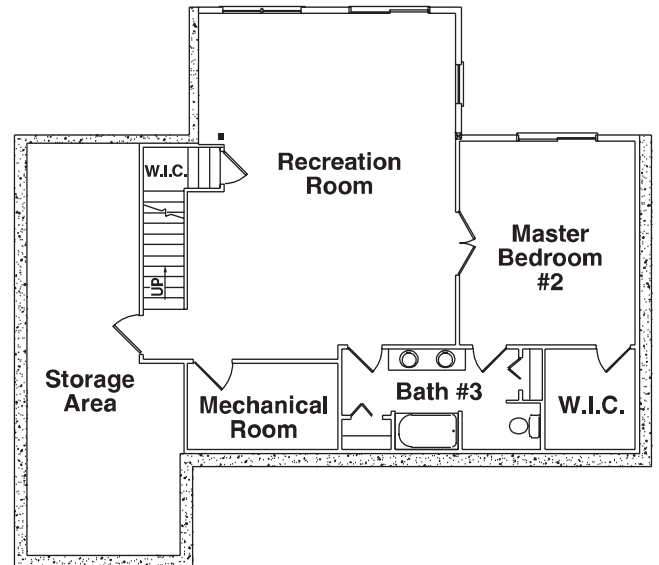
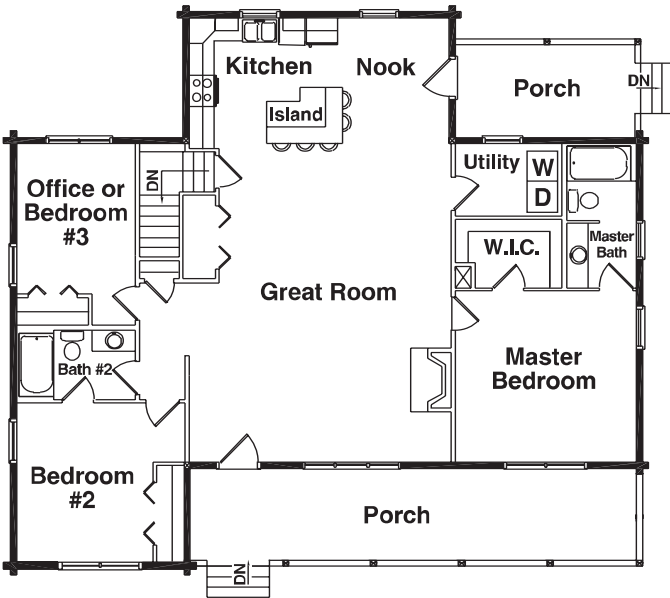
SITTING BEAR

Square Foot Totals
1st Floor = 1,625 ft ²
Optional Basement = 1,230 ft ²
Total Heated ft² = 2,855 ft²
Basement = 395 ft ²
Porch = 407 ft ²
Total Unheated ft² = 802 ft²



1st Floor Plan

Optional Floor Plan (Basement)



©2015 Walker Top Log Homes

Artistic rendering of model house and floor plans, subject to change without notice or obligation.

updated 5/6/15



In Partnership With ...



675 S Old Piedmont Highway
Greenville, SC 29611

office 864-220-2884 • fax 864-220-2818
email Info@WalkerTop.com • www.WalkerTop.com